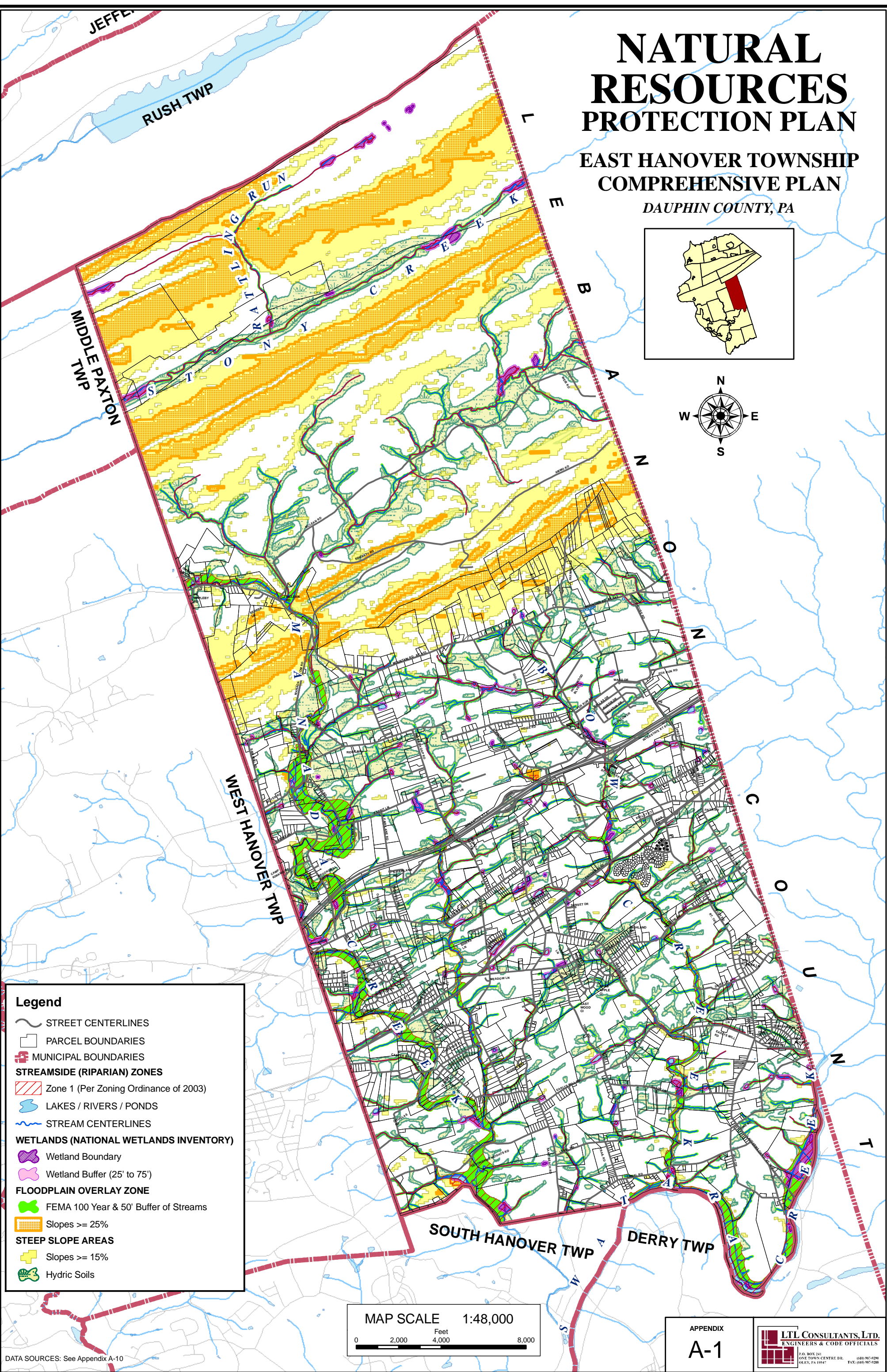
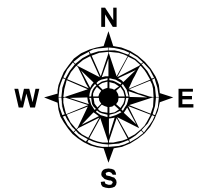
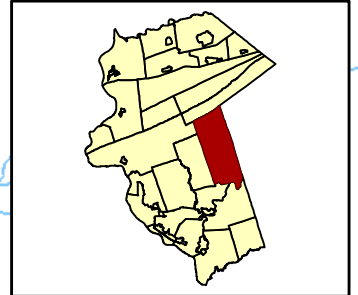


NATURAL RESOURCES PROTECTION PLAN

EAST HANOVER TOWNSHIP COMPREHENSIVE PLAN

DAUPHIN COUNTY, PA



Legend

- STREET CENTERLINES
- PARCEL BOUNDARIES
- MUNICIPAL BOUNDARIES
- STREAMSIDE (RIPARIAN) ZONES
 - Zone 1 (Per Zoning Ordinance of 2003)
- LAKES / RIVERS / PONDS
- STREAM CENTERLINES
- WETLANDS (NATIONAL WETLANDS INVENTORY)
 - Wetland Boundary
 - Wetland Buffer (25' to 75')
- FLOODPLAIN OVERLAY ZONE
 - FEMA 100 Year & 50' Buffer of Streams
- SLOPES \geq 25%
 - Slopes \geq 15%
- HYDRIC SOILS

MAP SCALE 1:48,000

0 2,000 4,000 8,000 Feet

DATA SOURCES: See Appendix A-10

APPENDIX

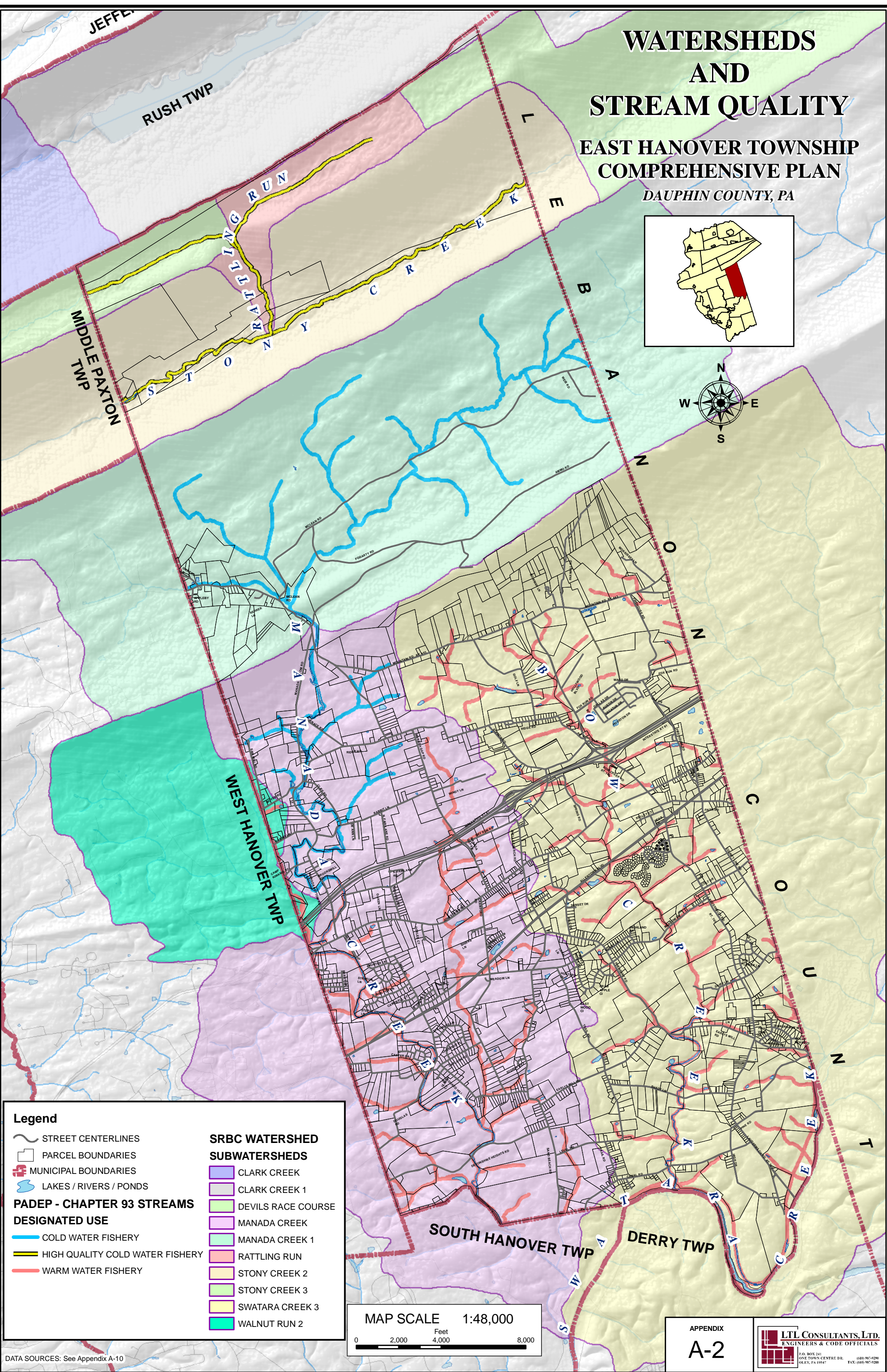
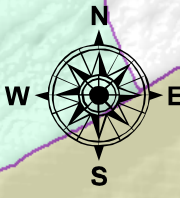
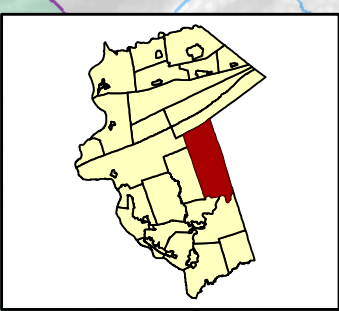
A-1

LTL CONSULTANTS, LTD.
ENGINEERS & CODE OFFICIALS
P.O. BOX 241
ONE TOWN CENTRE DR.
DAUPHIN, PA 17827
(610) 967-9299
FAX: (610) 967-9288

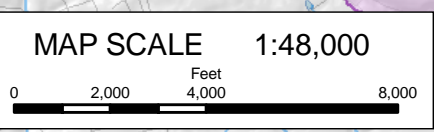
WATERSHEDS AND STREAM QUALITY

EAST HANOVER TOWNSHIP COMPREHENSIVE PLAN

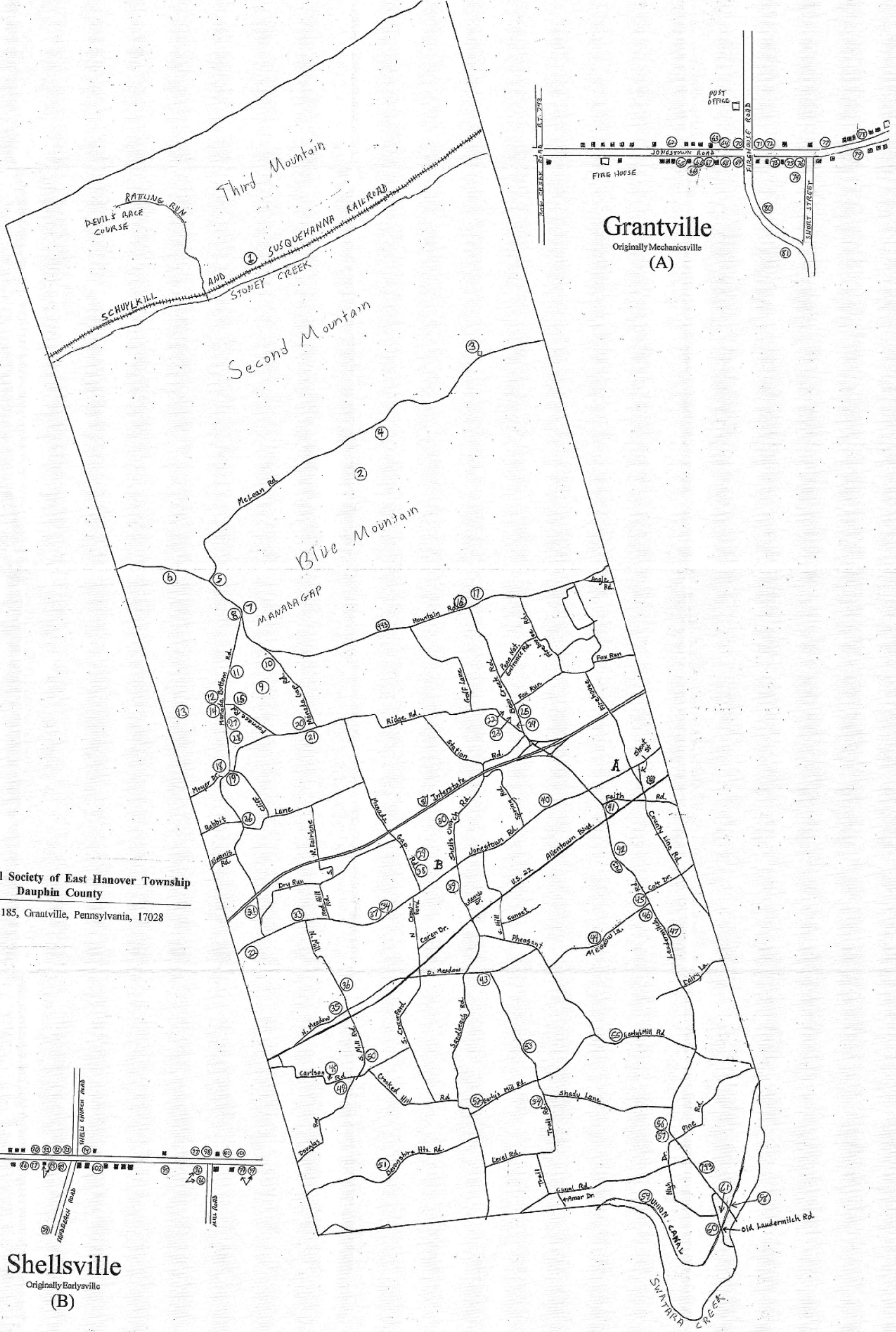
DAUPHIN COUNTY, PA




- Legend**
- STREET CENTERLINES
 - PARCEL BOUNDARIES
 - MUNICIPAL BOUNDARIES
 - LAKES / RIVERS / PONDS
 - PADEP - CHAPTER 93 STREAMS DESIGNATED USE**
 - COLD WATER FISHERY
 - HIGH QUALITY COLD WATER FISHERY
 - WARM WATER FISHERY
- SRBC WATERSHED SUBWATERSHEDS**
- CLARK CREEK
 - CLARK CREEK 1
 - DEVILS RACE COURSE
 - MANADA CREEK
 - MANADA CREEK 1
 - RATTILING RUN
 - STONY CREEK 2
 - STONY CREEK 3
 - SWATARA CREEK 3
 - WALNUT RUN 2



Map of
HISTORIC SITES
of
EAST HANOVER TOWNSHIP, DAUPHIN COUNTY



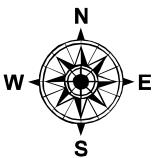
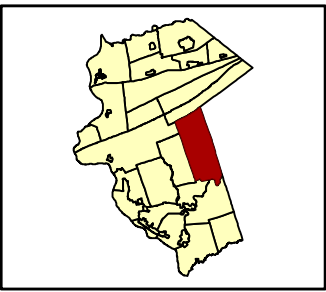
 **The Historical Society of East Hanover Township**
Dauphin County
P.O. Box 185, Grantville, Pennsylvania, 17028



TRANSPORTATION PLAN

EAST HANOVER TOWNSHIP COMPREHENSIVE PLAN

DAUPHIN COUNTY, PA



Legend

- MUNICIPAL BOUNDARIES
- STATE / INTERSTATE
- STREET CENTERLINES
- PARCEL BOUNDARIES
- LAKES / RIVERS / PONDS
- STREAMS
- POTENTIAL CONGESTION ISSUES
- CONGESTION ISSUES
- INTERSECTION ISSUE
- RECOMMENDED REPAIR

PA 462
PA 462

Trucks Idling in Rest Stop
Potential Pollution Issue

B1 - East Hanover Township -
Replace Bridge
on Jonestown Rd
over Bow Creek

Penn DOT MPMS 19106 -
Replace Bridge
on SR 2017 over
Manada Creek

Penn DOT MPMS 74516 -
Replace Bridge
on SR 2017 over
Manada Creek

Penn DOT MPMS 84012 -
Replace Bridge
on US Rte 22 over
Manada Creek

B2 - East Hanover Township -
Bridge Replacement at
Carlson Rd over Manada Creek

B3 - East Hanover Township -
Bridge Replacement at
Crooked Hill Rd over East
Branch of the Manada Creek

Rte 443
Potential Drainage
Problems

Potential COLT Transit Stop

Potential Park and Ride Location

Trucks Parking
on Ramp

Potential Park & Ride

Informal Carpool Area

Red Light Stacking

Red Light Stacking
Site Distance Problems

R-4 - East Hanover Township
Modify Profile and Shoulders.

Sight Distance Problems

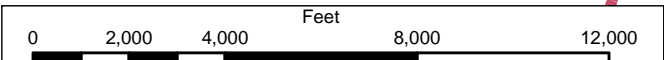
R3 - East Hanover Township
Modify Profile and Shoulders.

SITE DISTANCE
ISSUES

SOUTH HANOVER TWP

DERRY TWP

DATA SOURCES: See Appendix A-10



APPENDIX

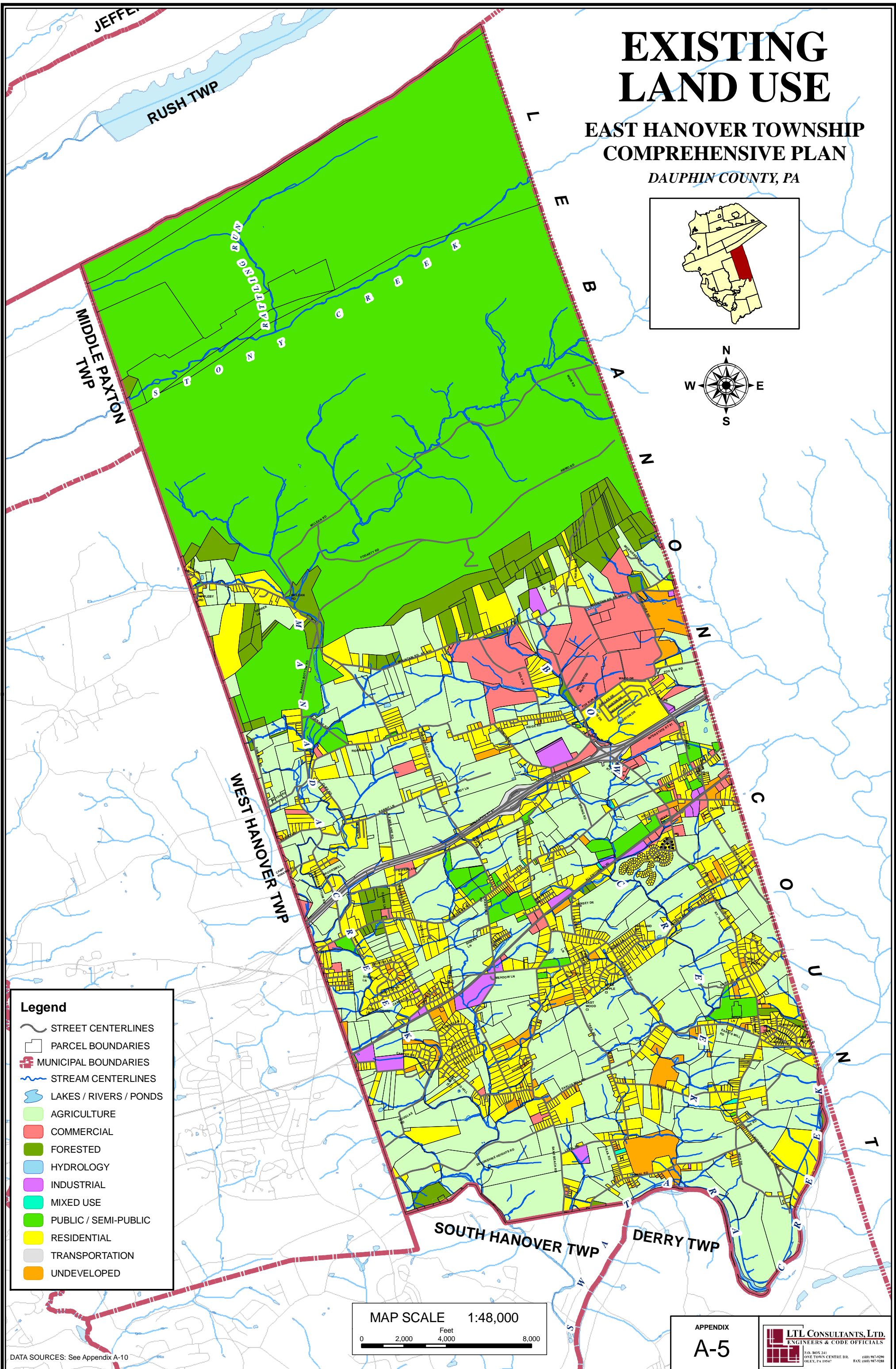
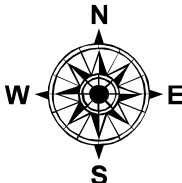
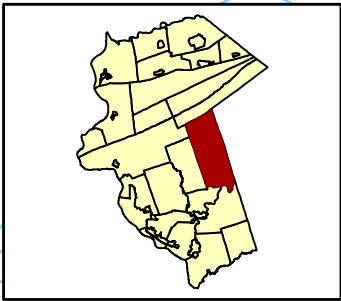
A-4



EXISTING LAND USE

EAST HANOVER TOWNSHIP COMPREHENSIVE PLAN

DAUPHIN COUNTY, PA



Legend

- STREET CENTERLINES
- PARCEL BOUNDARIES
- MUNICIPAL BOUNDARIES
- STREAM CENTERLINES
- LAKES / RIVERS / PONDS
- AGRICULTURE
- COMMERCIAL
- FORESTED
- HYDROLOGY
- INDUSTRIAL
- MIXED USE
- PUBLIC / SEMI-PUBLIC
- RESIDENTIAL
- TRANSPORTATION
- UNDEVELOPED

MAP SCALE 1:48,000

0 2,000 4,000 8,000 Feet

APPENDIX

A-5

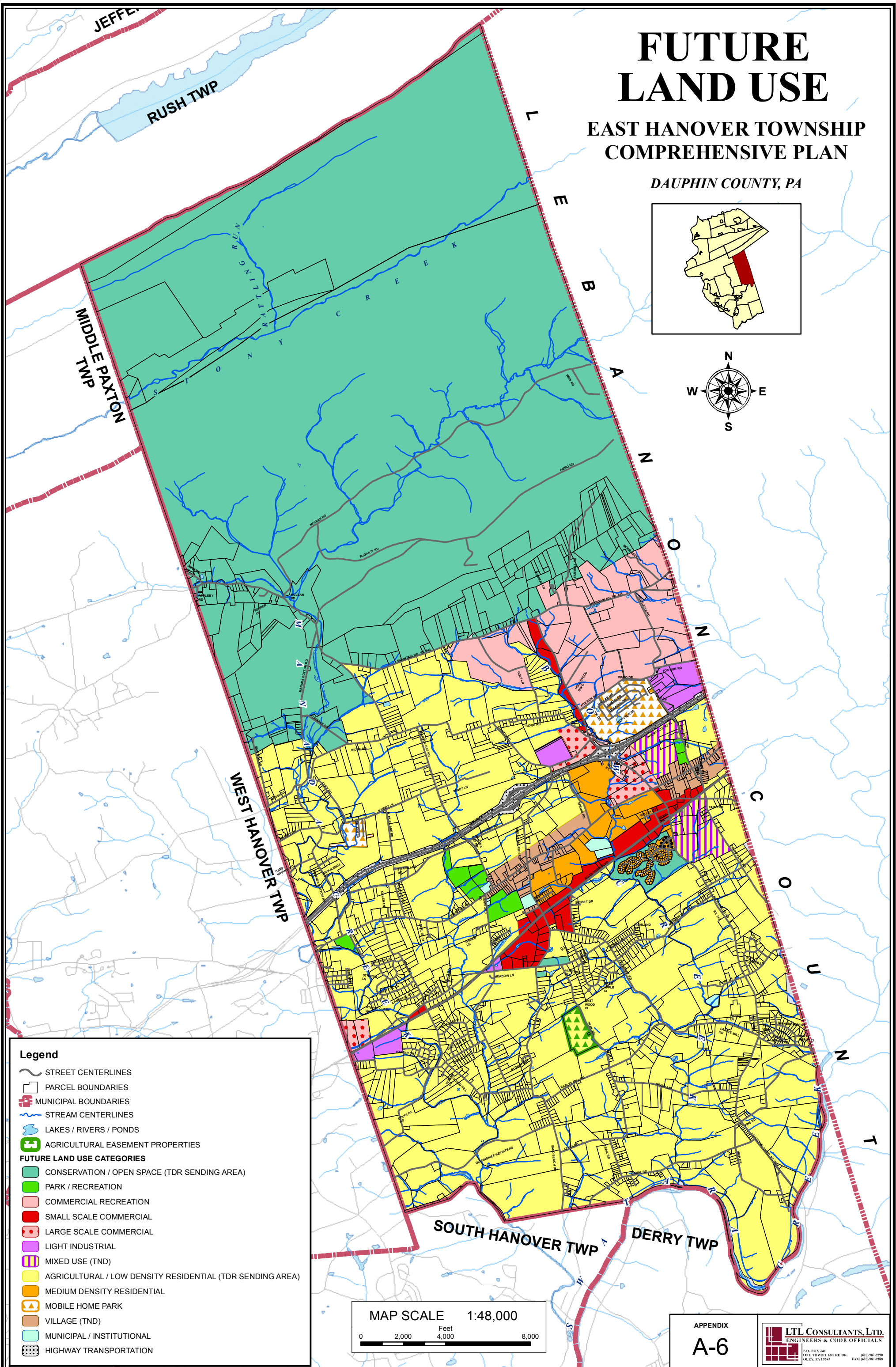
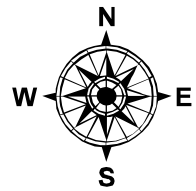
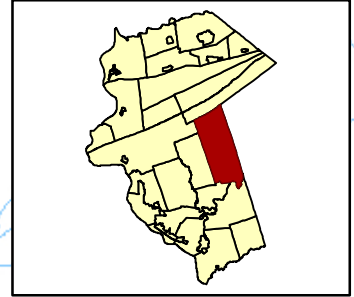
LTL CONSULTANTS, LTD.
ENGINEERS & CODE OFFICIALS
P.O. BOX 241
ONE TOWN CENTRE DR.
DAUPHIN, PA 17827
(610) 967-9299
FAX: (610) 967-9288

DATA SOURCES: See Appendix A-10

FUTURE LAND USE

EAST HANOVER TOWNSHIP COMPREHENSIVE PLAN

DAUPHIN COUNTY, PA



Legend

- STREET CENTERLINES
- PARCEL BOUNDARIES
- MUNICIPAL BOUNDARIES
- STREAM CENTERLINES
- LAKES / RIVERS / PONDS
- AGRICULTURAL EASEMENT PROPERTIES
- FUTURE LAND USE CATEGORIES**
- CONSERVATION / OPEN SPACE (TDR SENDING AREA)
- PARK / RECREATION
- COMMERCIAL RECREATION
- SMALL SCALE COMMERCIAL
- LARGE SCALE COMMERCIAL
- LIGHT INDUSTRIAL
- MIXED USE (TND)
- AGRICULTURAL / LOW DENSITY RESIDENTIAL (TDR SENDING AREA)
- MEDIUM DENSITY RESIDENTIAL
- MOBILE HOME PARK
- VILLAGE (TND)
- MUNICIPAL / INSTITUTIONAL
- HIGHWAY TRANSPORTATION

MAP SCALE 1:48,000

0 2,000 4,000 8,000 Feet

APPENDIX

A-6

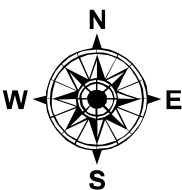
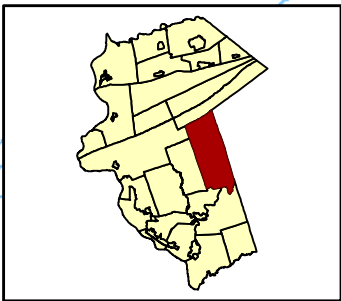
LTL CONSULTANTS, LTD.
ENGINEERS & CODE OFFICIALS
P.O. BOX 241
ONE TOWN CENTRE DR.
DAUPHIN, PA 17827
(610) 987-0299
FAX: (610) 987-0288

COMMUNITY FACILITIES	
Number	Facility Name / Owner
1	ASSEMBLY HALL JEHOVAHS WITNESS
2	FULL GOSPEL MISSION
3	EAST HANOVER MENNONITE CHURCH
4	EAST HANOVER TOWNSHIP- MUNICIPAL BLDG
5	EAST HANOVER TOWNSHIP- MUNICIPAL BLDG
6	VFW POST 9639
7	FAITH UNITED CHURCH OF CHRIST
8	FURNACE MEETING HOUSE
9	GRANTVILLE VOLUNTEER FIRE COMPANY
10	GRANTVILLE VOLUNTEER FIRE COMPANY
11	LOWER DAUPHIN SCHOOL DISTRICT
12	NEW LIFE ASSEMBLY OF GOD
13	PROVIDENCE MENNONITE CHURCH
14	SHELLS EVANGELICAL LUTHERAN CHURCH
15	SOUTH CENTRAL EMERGENCY MEDICAL
16	ST JOHNS UNITED METHODIST CHURCH

COMMUNITY FACILITIES and UTILITIES

EAST HANOVER TOWNSHIP COMPREHENSIVE PLAN

DAUPHIN COUNTY, PA



Legend

- STREET CENTERLINES
- PARCEL BOUNDARIES
- MUNICIPAL BOUNDARIES
- STREAM CENTERLINES
- LAKES / RIVERS / PONDS

COMMUNITY FACILITIES BY TYPE

- EDUCATIONAL
- RELIGIOUS
- FIREHOUSE
- LEGION/VFW/CLUB
- POSTOFFICE
- LOCAL GOVERNMENT BUILDING
- EMERGENCY MEDICAL

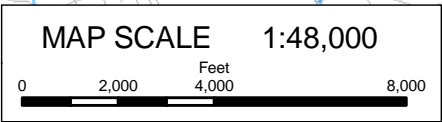
UTILITIES**by Dauphin Land Use Type**

- GAS UTILITY
- WASTEWATER TREATMENT
- ELECTRIC UTILITY
- TELEPHONE UTILITY
- PRIVATE SEWER SERVICE
- EXISTING SEWER SERVICE
- SEWER SERVICE PLANNED BY 2022
- SEWER SERVICE PLANNED BY 2014
- SEWER SERVICE PLANNED BY 2013
- PARCEL BOUNDARIES
- 300' ELECTRIC ROW
- HIGH TENSION ELECTRICAL LINE
- HIGH TENSION TOWER
- SEWER MAINS

WEST HANOVER TWP

SOUTH HANOVER TWP

DERRY TWP



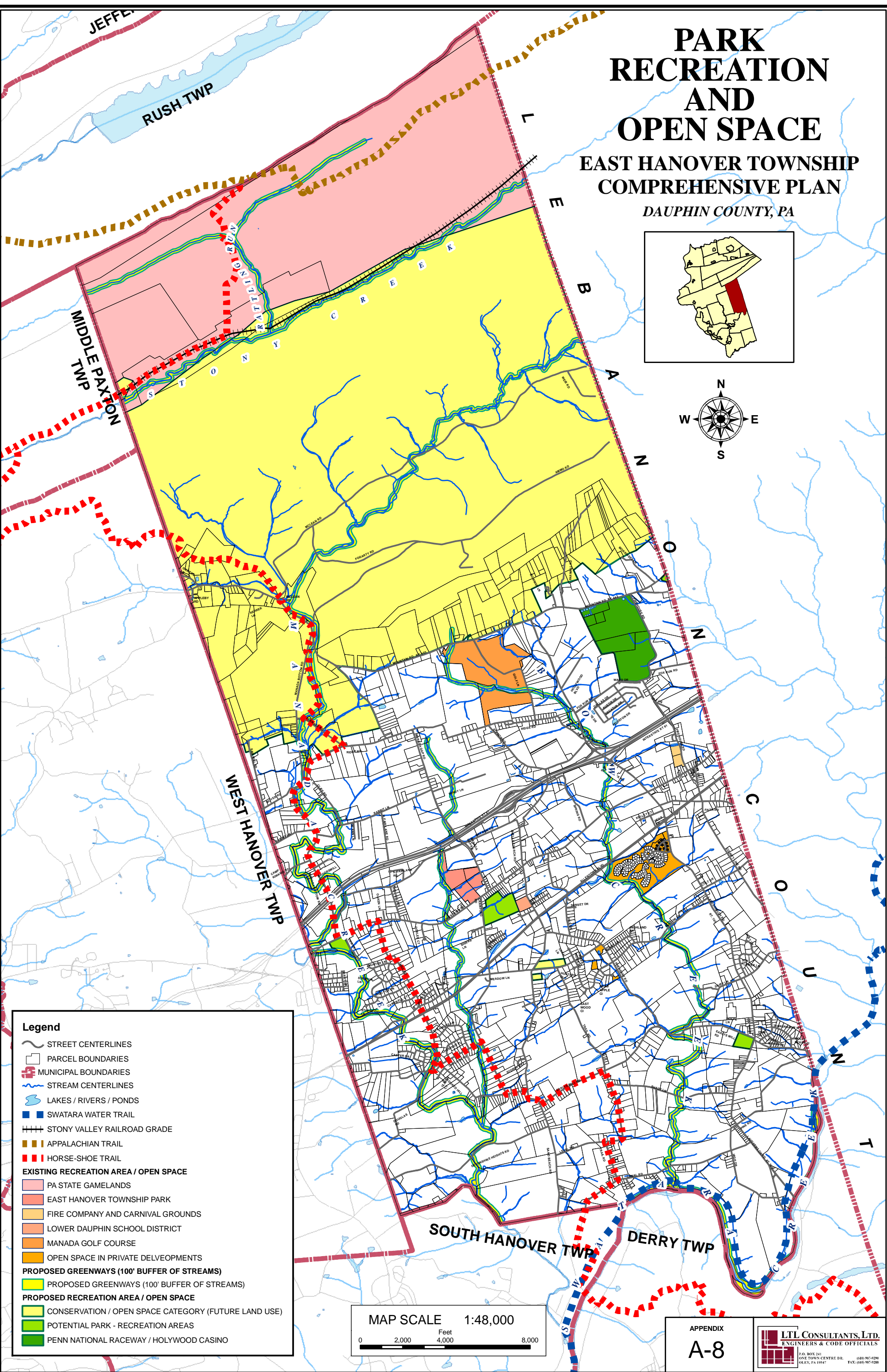
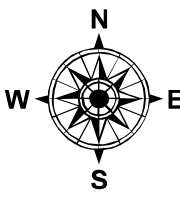
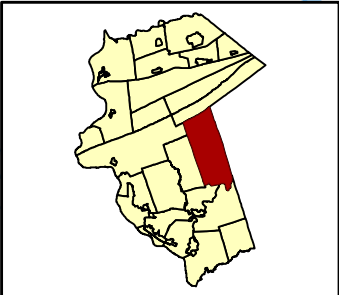
APPENDIX
A-7

LTL CONSULTANTS, LTD.
ENGINEERS & CODE OFFICIALS
P.O. BOX 241
ONE TOWN CENTRE DR.
DAUPHIN, PA 17827
(610) 967-9299
FAX: (610) 967-9288

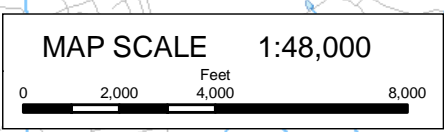
PARK RECREATION AND OPEN SPACE

EAST HANOVER TOWNSHIP COMPREHENSIVE PLAN

DAUPHIN COUNTY, PA



- Legend**
- STREET CENTERLINES
 - PARCEL BOUNDARIES
 - MUNICIPAL BOUNDARIES
 - STREAM CENTERLINES
 - LAKES / RIVERS / PONDS
 - SWATARA WATER TRAIL
 - STONY VALLEY RAILROAD GRADE
 - APPALACHIAN TRAIL
 - HORSE-SHOE TRAIL
 - EXISTING RECREATION AREA / OPEN SPACE**
 - PA STATE GAMESLANDS
 - EAST HANOVER TOWNSHIP PARK
 - FIRE COMPANY AND CARNIVAL GROUNDS
 - LOWER DAUPHIN SCHOOL DISTRICT
 - MANADA GOLF COURSE
 - OPEN SPACE IN PRIVATE DEVELOPMENTS
 - PROPOSED GREENWAYS (100' BUFFER OF STREAMS)**
 - PROPOSED GREENWAYS (100' BUFFER OF STREAMS)
 - PROPOSED RECREATION AREA / OPEN SPACE**
 - CONSERVATION / OPEN SPACE CATEGORY (FUTURE LAND USE)
 - POTENTIAL PARK - RECREATION AREAS
 - PENN NATIONAL RACEWAY / HOLLYWOOD CASINO



APPENDIX

A-8

LTL CONSULTANTS, LTD.
ENGINEERS & CODE OFFICIALS

P.O. BOX 241
ONE TOWN CENTRE DR.
DAUPHIN, PA 17827

(610) 967-9299
FAX: (610) 967-9288

APPENDIX A-10
DATA SOURCES SUMMARY

- **STREETS** – Derived from Centerline files from the Dauphin County GIS department, 2009. Some modifications were made for spatial accuracy based on aerial photography from the PA Map Project 2005 – 2007 by USGS and downloaded from the Pennsylvania Spatial Data Access in 2009 and 2010.
- **PARCELS** – Parcel Boundary Polygons were provided by the Dauphin County GIS Department 2010.
- **MUNICIPAL BOUNDARIES** – Municipal Boundaries were provided by the Dauphin County GIS Department 2010.
- **SHADED RELIEF** – This layer was provided by the Tri County Regional Planning Commission in 2009. The national elevation dataset (USGS) was used to generate this layer.
- **STREAMS** – Streams used in the background were derived from centerlines provided by Pennsylvania Department of Environmental Protection (305b streams). Downloaded from PASDA Website in 2009. Some modifications were made for spatial accuracy based on aerial photography from the PA Map Project 2005 – 2007 by USGS and downloaded from the Pennsylvania Spatial Data Access in 2009 and 2010.
- **LAKES, RIVERS, PONDS** – This data was generated using the National Hydrography Dataset with modifications to shape based on aerial photography from the PA Map Project 2005 – 2007 by USGS and downloaded from the Pennsylvania Spatial Data Access in 2009 and 2010.
- **RIPARIAN ZONES** – Zone 1,2, and 3, were generated by LTL Consultants Ltd, in 2010 based on specifications provided in the East Hanover Township Zoning Ordinance.
- **WETLANDS** – Wetland boundaries were derived from the National Wetland Inventory last updated in 2008, downloaded from PASDA in 2010.
- **FLOODPLAINS** – Derived from the Federal Emergency Management Agency (FEMA) Digital Flood Insurance Rate Maps (DFIRM) downloaded in 2009 and modified with FEMA released modifications in 2010.
- **SLOPES** – Steep and Moderate Slopes were generated using the Nation Elevation Dataset downloaded from the USGS in 2010.
- **HYDRIC SOILS** – Derived from the US Department of Agriculture Soil Survey Geographic (SSURGO) Database using the Soil Data Viewer application also from USDA and the Natural Resources Conservation Service 2009-2010.
- **CHAPTER 93 STREAMS** – Pennsylvania Department of Environmental Protection 2009. Downloaded from PASDA 2010.
- **SRBC WATERSHEDS AND SUBWATERSHEDS** – From Susquehanna River Basin Commission, downloaded from PASDA 2010.

- HISTORIC SITES – Map duplicated from the East Hanover Township Historical Society Map 2000.
- INTERSECTION ISSUES, RECOMMENDED REPAIRS, CONGESTION ISSUES, POTENTIAL CONGESTION ISSUES: Derived in 2010 by LTL Consultants, Ltd., from information provided in the HATS Regional Transportation Studies 2003-2009, and interview with East Hanover Township public works staff.
- EXISTING LAND USE – Generated by LTL Consultants, Ltd. using Dauphin county Parcel land use data, Anderson land use classification information provided by the Tri County Planning Commission, and modified using aerial photography from the PA Map Program, downloaded from PASDA, 2010.
- FUTURE LAND USE – Generated by LTL Consultants, Ltd. based on meetings with the East Hanover Township Commission. Final version reviewed and approved in August 2011.
- COMMUNITY FACILITIES AND UTILITIES – Generated by LTL Consultants, Ltd. Using Dauphin County Parcel Data, interviews with East Hanover Township Staff, National Pipeline Mapping System, aerial Photography from PA Map, and East Hanover Township Act 537 Sewage Facilities Plan of 2011.
- TRAILS – Derived from the PA Department of Conservation and Natural Resources via download from PASDA 2010.
- EXISTING AND PROPOSED RECREATION AND OPEN SPACE AREAS– Derived from Dauphin County Parcel Data land use codes and interview with East Hanover Planning Commission and staff 2009-2011.
- PROPOSED GREENWAYS – Based on GIS analysis of stream datasets from PADEP by LTL Consultants, Ltd. 2009-2010.